

## How to interpret the aura on the Genius

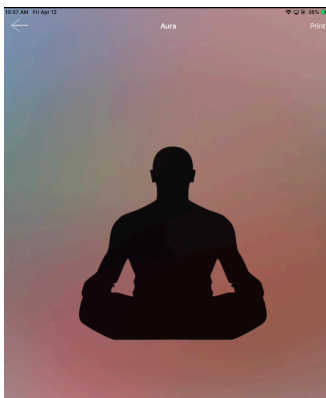
The aura panel can be thought of as a sort of monitoring panel. Place the frequencies you want to balance into the main hold tray. Then, navigate to the Aura panel. Once inside, choose a short time to balance. For example 1-3 minutes. Tap Begin Analysis to get an initial sense of where the person's aura is right at the beginning. Take a screen shot of the aura picture for comparison to a later one and then one at the end. When the aura is filled with purple, pink, green and higher vibrational colors, you are at a good ending point for the session but it is not absolutely necessary to achieve these goals.

Once you have balanced for a few minutes, you will be able to choose "Begin Analysis" again and get new results as to where the energy is moving. The aura picture is facing you and frequencies are moving through the body from the person's left side, or as you view it the right side. They take in frequencies through this side and they release energy through their right side.

Typically, you will start out with frequencies associated with the lower chakras, reds, orange and yellow. These may have a muddy tone to them. As you proceed, you will often see results progress to green, pink, purple and blue tones. If you run the frequencies for longer than 5 minutes, you may see the tones go through cycles. The higher chakra colors will revert to lower chakra colors and then come back to the purple and pink once again. You are viewing the process of the person working through the frequencies and experiencing that in the energy field in a cyclical way.

In the aura picture, the person is facing you. So your right view is their left side. The energy they are receiving from the Genius can often be visualized as the energy moving in on that right side view for you. On the other side, the energy is moving out. It takes some practice to understand the aura by reviewing the color meanings below. Do your own research on auras to take the information to a deeper levels. The general pattern you are looking for is a clearing of gray, black, brown and murky appearance of the energy that may appear like "split pea soup" regardless of the color it has a fuzzy appearance. This should clear away during the session.

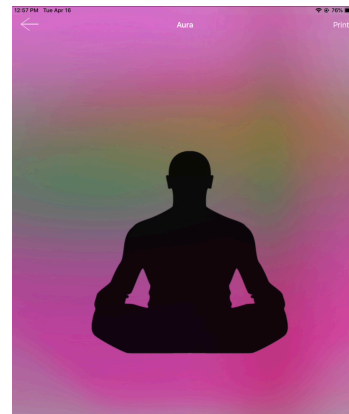
It is a great practice to monitor the aura at different times during the session, retesting it as you go along. You will be able to see your progress and your client can enjoy seeing the movement as well. It is perfectly fine to send the aura pictures of before and after and it is actually a great marketing tool as many people are fascinated by the aura. However, do remember to explain that it energetic information only.



The browns and earth tones are stuck energy, pain, physical condition of some taking



The greenish yellow color is associated with digestive distress and liver gallbladder congestion



Higher energy healing is flooding the aura with the pink tones you see here, heart reconnection. It is likely there is a brain/head/neck area healing still taking place.

Color	Meaning
Red	Relates to the physical body, heart or circulation. The densest color, it creates the most friction. Friction attracts or repels; money worries or obsessions; anger or unforgiveness; anxiety or nervousness
Orange	Relates to reproductive organs and emotions. The color of vitality, vigor, good health and excitement. Lots of energy and stamina, creative, productive, adventurous, courageous, outgoing social nature; currently experiencing stress related to appetites and addictions;
Yellow	Relates to the spleen and life energy. It is the color of awakening, inspiration, intelligence and action shared, creative, playful, optimistic, easy-going. If the yellow has a mustard/green tinge to it, it is often related to digestion and specifically to the need to clear liver/gallbladder.
Green	Relates to heart and lungs. It is a very comfortable, healthy color of nature. When seen in the aura this usually represents growth and balance, and most of all, something that leads to change. Love of people, animals, nature; teacher; social.
Blue	Relates to the throat, thyroid. Cool, calm, and collected. Caring, loving, love to help others, sensitive, intuitive.

Color	Meaning
Violet	Relates to crown, pineal gland and nervous system. The most sensitive and wisest of colors. This is the intuitive color in the aura, and reveals psychic power of attunement with self. Intuitive, visionary, futuristic, idealistic, artistic, magical.
Gold	The color of enlightenment and divine protection. When seen within the aura, it says that the person is being guided by their highest good. It is divine guidance. Protection, wisdom, inner knowledge, spiritual mind, intuitive thinker.
Black	Draws or pulls energy to it and in so doing, transforms it. It captures light and consumes it. Usually indicates long-term unforgiveness (toward others or another) collected in a specific area of the body, which can lead to health problems.
White	Reflects other energy. A pure state of light. Often represents a new, not yet designated energy in the aura. Spiritual, etheric and non-physical qualities, transcendent, higher dimensions. Purity and truth; angelic qualities.